

Evolution 12 Outdoor Camera

QUICK START GUIDE



EVO-12-NMD



Welcome

The Oncam Evolution 12 Outdoor 360° camera is designed to be connected to an IP network. Configure and operate the camera using a standard internet browser.

Described are the installation and configuration procedures for a standard surface mount camera application.

Power Input	12 VDC, 1.0 A (min) LPS or NEC Class 2 power supply or Power over Ethernet (PoE), IEEE standard 802.3af
Operating Temperature	-40 to +55°C (-40 to +131°F)
Enclosure	Aluminum with polymer bubble
Weight	1.12 kg (2.47 lbs)

Supplied Parts

- EVO-12 Camera
- Base Assembly
- Trim Cover
- Security Screw Driver Bit
- Quick Start Guide
- Drilling Template

Technical Support

For the A&E, Specification, Installation and User Manual, Software and Firmware visit:

www.oncamgrandeye.com/resources/product-downloads/

Tel: UK +44 (0)20 7371 6640

US +1 978 735 4860

Email: support@oncamgrandeye.com

MAC Address

Document the camera's installation location and unique MAC address. Find the MAC address printed on the camera label. This information may be needed during the camera configuration.



Installation & Mounting

The Evolution Outdoor Dome camera is IP-66 rated and vandal resistant.

The wire grommets on the back are sealed until perforated by the installer. The integrity of these seals are essential in order to keep moisture from entering the enclosure. Carefully pierce the seals to ensure the integrity of the seal around the cable.

Configure cabling to enter the camera from the side or rear of the mounting base. Routing cabling from the rear is recommended where possible to offer improved vandal and tamper resistance.

Preparation

1. Puncture the diaphragm of the grommet by using a sharp tool.
2. Pass a round Ethernet cable (CAT5 or better) through a 20 mm compression cable gland. If using the side entry or one of the rear rubber grommets, gently pull the cable through the grommet to help secure the seal.

NOTICE: Secure the cable to prevent movement.

3. Prepare the wires in accordance with EIA 568B standards for crimping (RJ45 connector not supplied).

Installation

1. Using the drilling template, attach the Base Assembly to the surface with the four holes located outside the trim ring seal joint.
Note: Use hardware appropriate for the mount surface to support a minimum of four times the weight of the camera and enclosure.
2. Remove the alarm connector (if necessary).
3. Pass the Ethernet cable around the camera, securing the cable into position.
4. Attach the Camera Module and route cables.
5. Rotate the Camera Module into the mounting clip in the Base Assembly.
6. Fasten the Camera Module in place with the captive thumb screw.
7. Assemble the Trim Cover using the four captive security screws.



Important

- Read these instructions carefully before installing or operating this camera.
- This camera should be installed by a qualified service person and the installation should conform to local and national regulations.
- This camera is not suitable for installation in a ceiling void that is used as an air handling space.
- Certified as FCC Class A. In a domestic environment this camera may cause radio interference in which case the user should take adequate measures.



DANGER: RISK OF EXPLOSION IF REPLACING A BATTERY WITH AN INCORRECT BATTERY TYPE.

Configuring Network Settings

Powering the Camera

Supply power to the camera with PoE IEEE802.3af through the integrated RJ45 Ethernet cable.

IP Settings

In order to use the camera you need the IP address.

There are two IP Settings.

- DHCP server or router to automatically assign unique valid IP addresses to each camera.
- A manually configured network using static IP addresses.

If your network has a DHCP server, go to First Time Camera Access.

Should a DHCP server not be available, the camera adopts the default static IP address 192.168.0.200. You will then need to manually assign each camera with a new unique IP address.

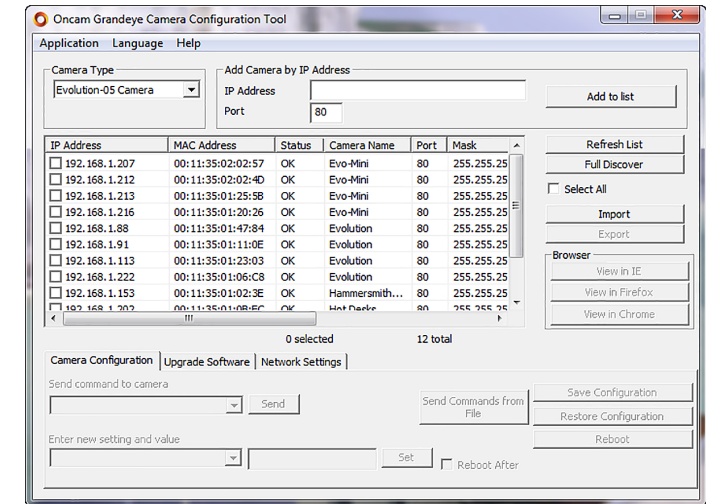
Note: See the camera's User Manual and Camera Configuration Tool User Manual for IP Setting adjustments.

Using the Camera Configuration Tool

Go to the OnCam website (<https://www.oncamgrandeye.com/resources/camera-config-tool/>) to download the latest version of the Camera Configuration tool and corresponding User Manual.

The Camera Configuration tool quickly finds the IP and MAC addresses of all OnCam Evolution cameras connected to the network. It also allows you to change network settings, configure the system and perform software updates on multiple cameras. Initiate a new scan by clicking the Full Discover button. Start the application by clicking the CameraConfigurationTool icon found on your desktop or from the program list (under OnCam Grandeye). The software scans the network and provides a list of all connected OnCam Evolution cameras.

Note: Some functions in this tool require a username and password. If accessing the camera for the first time, an administrator username and password will need to be set.



Note: The Evolution 05 screen is shown, the Evolution 12 is identical.

First Time Camera Access

Web Browser

1. If you know the IP address of the camera, enter this into the address bar of your web browser (Internet Explorer, Edge, Firefox or Chrome). The camera should be on the same network.
2. Create an Admin username and password.

Notes:

Internet Explorer 11 is required to view live camera images in the browser. All other browsers can be used for configuration purposes only.

Ensure you have the latest [VLC Media Player](http://www.videolan.org/vlc/index.html) (<http://www.videolan.org/vlc/index.html>) for viewing camera images on the web interface.

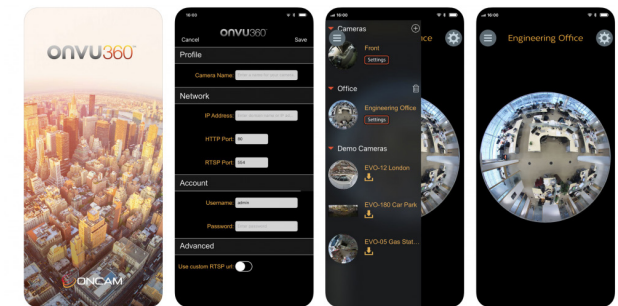
Camera Configuration Tool

1. Select a camera from the camera list
2. Select your browser to open the web interface.
3. Click OK on the authentication pop up. You will then be prompted to create and set an Admin username and password to access the camera.



Download our FREE ONVU360 Pro mobile application and put the 360-degree experience right at your fingertips.

Scan the QR Code to get it now!



Android

iOS

