

Oncam 360 Plugin

for Milestone Smart Client - User Manual



USER MANUAL – VERSION 1.21.0 - JAN 2021

Contents

1. Legal and Warnings	3
2. Oncam 360 Plugin Overview	5
3. Loading the Plugin	5
4. Using the Plugin.....	7
5. Removing a Plugin Instance.....	11

1. Legal and Warnings



Please Read before Installation

Read through the guide carefully before installing the product. Keep this guide for future reference. If you need further support during installation, please visit:

<https://www.oncamgrandeye.com/>

1.1 Legal Considerations

The use of video surveillance may be regulated by local laws that vary from country to country. Please check the laws in your local region before using this product for surveillance purposes.

1.1.1 Intellectual Property Rights

Oncam has intellectual property rights relating to the technology embodied in the product described in this document. These intellectual property rights may include one or more of the Oncam patents or pending patent applications in the US and other countries. This product contains licensed third-party software.

1.1.2 Liability Notice

Every care has been taken in the preparation of this and the accompanying installation documentation.

©Oncam Global Group AG, 2013 - 2020. All rights reserved. No part of this manual may be reproduced except for your express personal use. Oncam and their affiliate's further reserve the right to alter, amend or revise this document and any product specifications without any obligation to provide notice of such changes. Oncam and its affiliates make no guarantee, representation, or warranty, either expressed or implied, regarding the accuracy of the information contained in this manual. Furthermore, Oncam and its affiliates assume no responsibility or any potential liability for any errors that may appear in this manual.

For product and service liabilities please refer to our standard terms and conditions. <https://www.oncamgrandeye.com/terms-and-conditions/>

1.1.3 Trademarks and Third-Party Trademarks

"ONCAM" and the "ONCAM logo" are trademarks, and in some cases registered or protected trademarks, of Oncam Global Limited and/or Oncam Global, Inc., including under registration in the UK, India and in the U.S. Patent and Trademark Office.

The names of other companies, organizations, products or services mentioned in this manual are the trademarks of their respective owners.

1.1.4 Copyright

© Copyright 2020 ONVU Technologies AG. All rights reserved. Oncam is a trading name of ONVU Technologies AG.

1.1.5 Contact Information

For our contact details please go to: <https://www.oncamgrandeye.com/contact-us/>

1.1.6 Support

If you require any technical assistance, please contact your Oncam reseller. If your questions cannot be answered immediately, your reseller will forward your queries through the appropriate channels to ensure a rapid response. If you are connected to the Internet, you can go to:

<https://support.oncamgrandeye.com/>

Here you can:

- Download user documentation and software updates.
- Find answers to resolved problems in the FAQ database, search by product, category, or phrase.

To contact us via email, please use support@oncamgrandeye.com.

Include the following in your email:

- A detailed description of the problem
- Camera model numbers
- Relevant configuration information

2. Oncam 360 Plugin Overview

Oncam 360 is a plugin for Milestone Smart Client applications to be used with Oncam fisheye cameras. Once installed, the plugin will allow the user to dewarp the original fisheye image in order to provide an intuitive pan-tilt-zoom (PTZ) experience.

3. Loading the Plugin

In order to use the Oncam 360 plugin, it must be loaded into a view item. More than one instance of the Oncam 360 plugin can be used at the same time. To add a plugin instance to the view layout, first enter the “Setup Mode” by clicking on the “Setup” button, located on the upper right portion of the client application (Fig.1). It is possible to enter the “Setup Mode” from both “Live” and “Playback” modes.

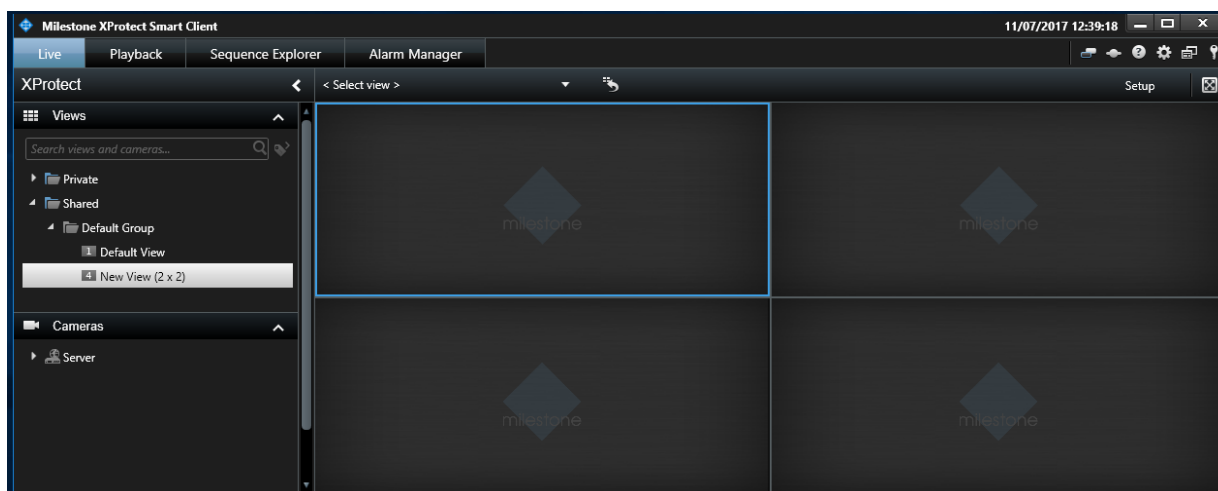


Fig.1. Smart Client application.

Once the setup mode is activated, the list of available plugins will be displayed under the “System Overview” tab, located on the left pane (Fig. 2).

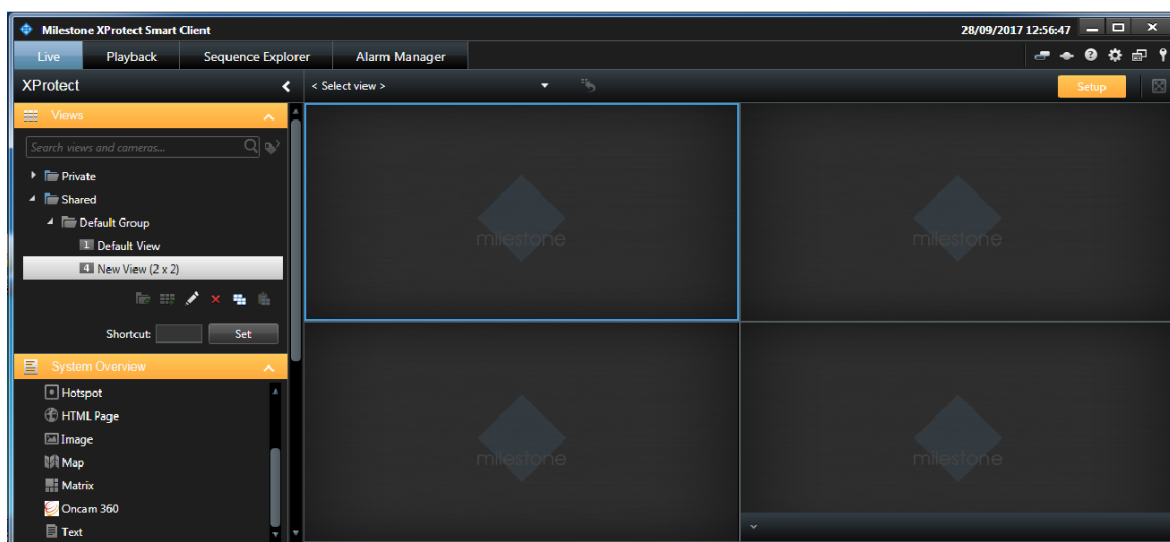


Fig 2. Setup mode.

To add the Oncam 360 plugin to the view's layout, locate the "Oncam 360" plugin in the available plugins list, and drag and drop the list item onto the layout. Multiple instances of the Oncam 360 plugin can be added to the view's layout (Fig.3).

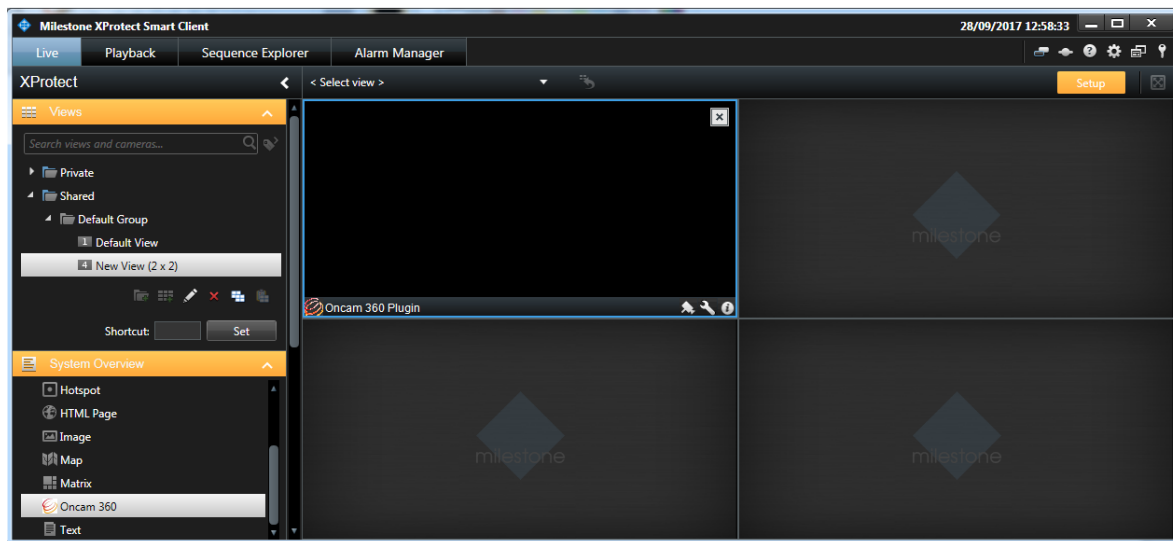


Fig.3. Available Plugins, listed under "System Overview" tab.

Once the addition of the plugin(s) is completed, click on the "Setup" button again to exit the setup mode (Fig. 4).

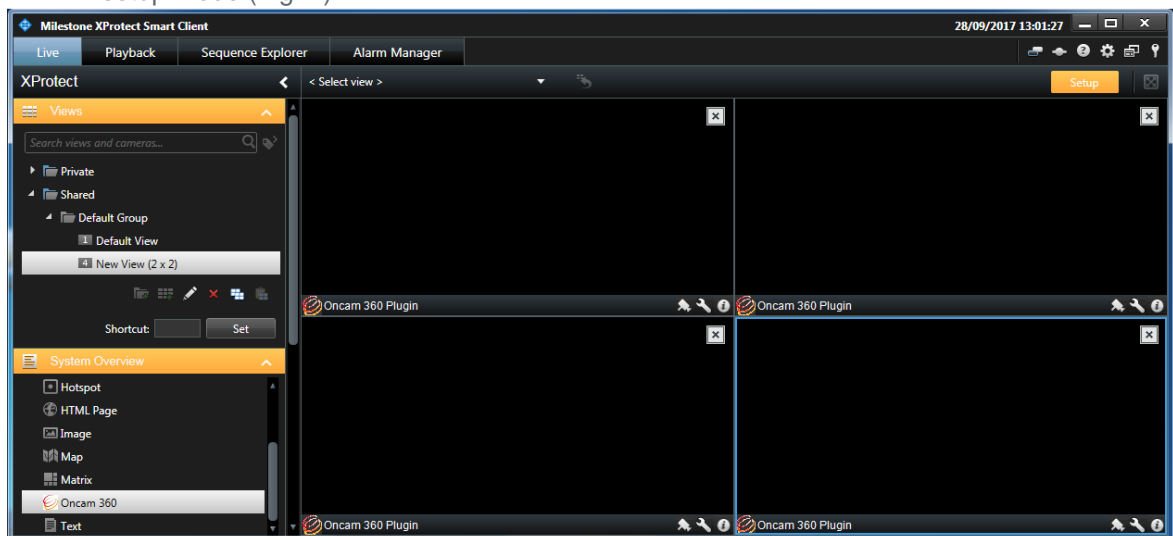


Fig.4. Ready to exit the setup mode.

4. Using the Plugin

4.1 Selecting a Camera

A connection to a camera can be established by clicking on the “Camera Icon” located on the bottom toolbar of each plugin instance and selecting a camera from the camera list dialog (Fig. 5). Each instance of the Oncam 360 plugin works independently, and it is possible to view multiple cameras or multiple views from a single camera. Once a camera is selected, it is possible to apply pan, tilt and zoom to the camera view by simply dragging the mouse and using the mouse wheel.

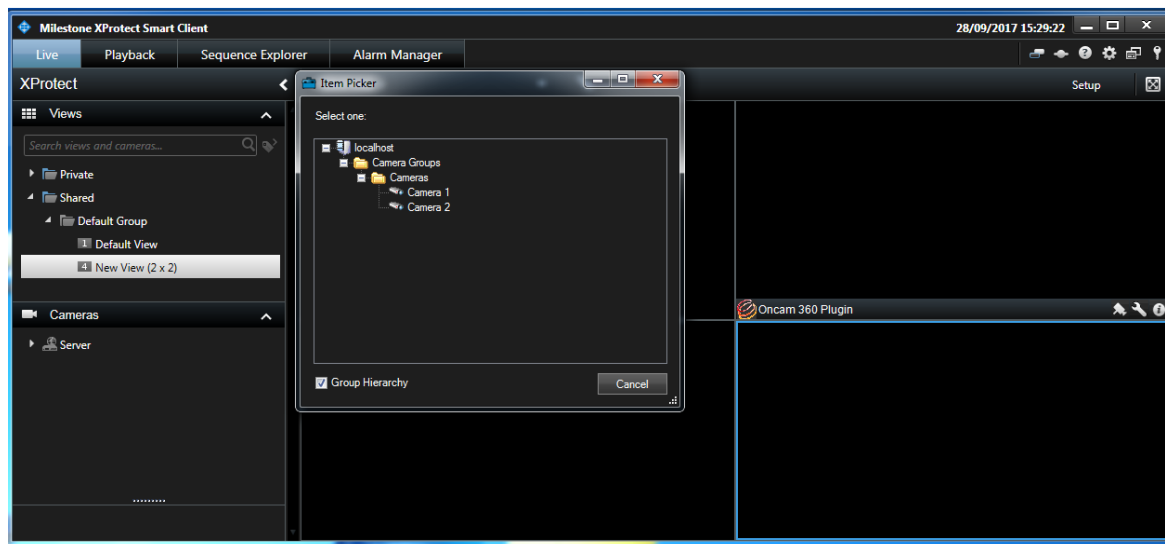


Fig.5. Selecting a camera.

4.2 Switching Between Live and Playback Modes

It is possible to switch between “Live” and “Playback” modes instantly, by clicking on the “Live” or “Playback” buttons, located at the top left portion of the Smart Client application. In “Live” mode, each Oncam 360 plugin displays the live stream from the selected camera (Fig. 6).

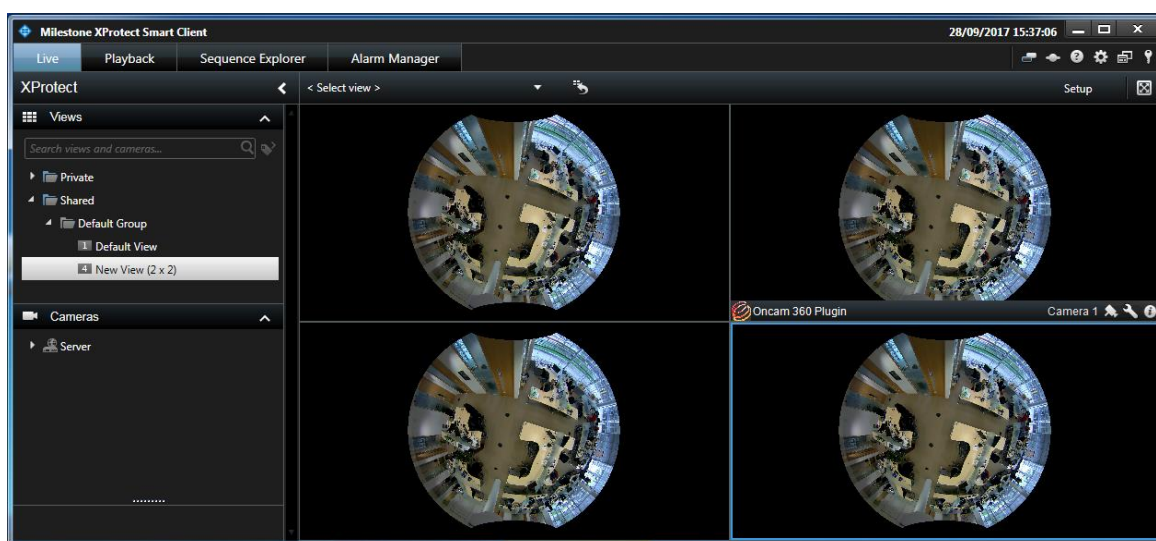


Fig. 6. “Live” mode.

When “Playback” mode is selected, the timeline information is updated according to the corresponding recorded database for the selected cameras. Playback can be performed using the buttons at the bottom of the Smart Client application (Fig. 7).

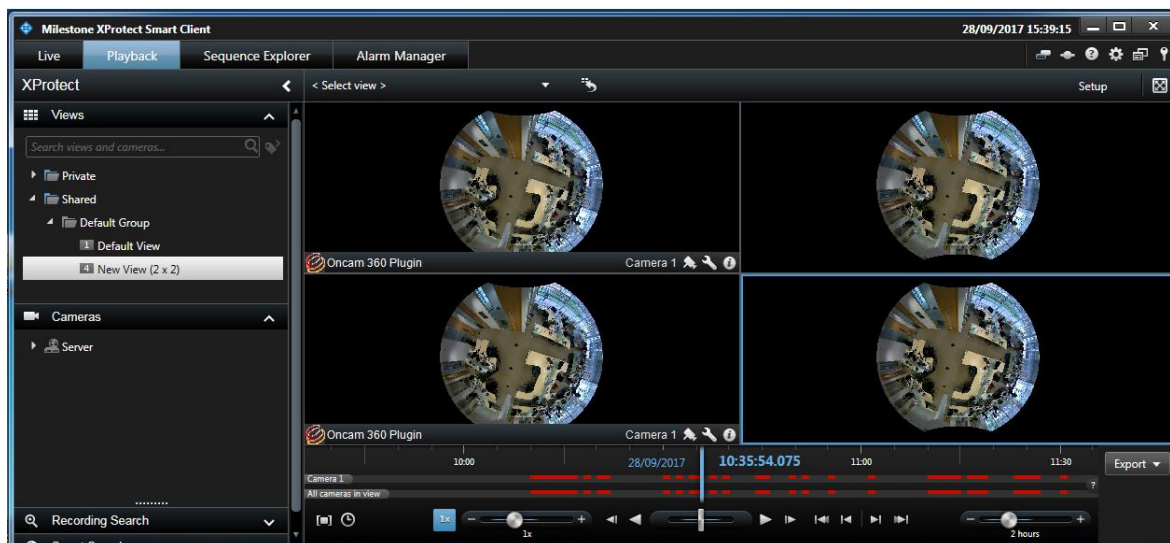


Fig. 7. “Playback” Mode.

4.3 Options

Options menu can be accessed from the bottom toolbar, by clicking on the “Wrench” icon.

4.3.1 Save PTZ

By clicking the Save PTZ button, the pan, tilt and zoom values for the selected plugin instance is saved to the disk. (Fig. 8) When the Smart Client application is opened, each instance of the Oncam 360 plugin opens with the saved PTZ values.

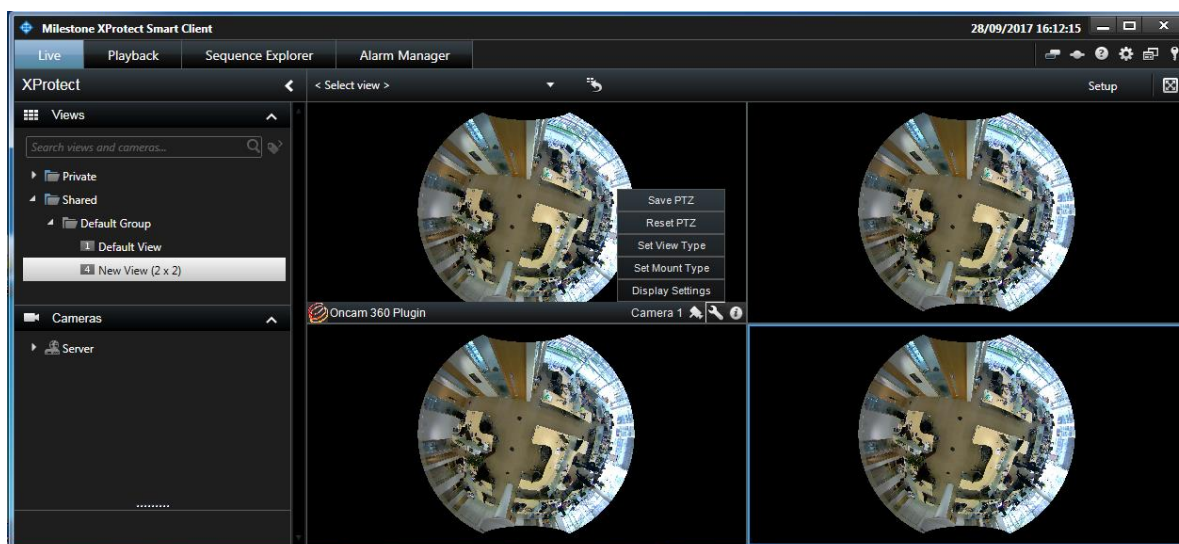


Fig. 8. Options. Saving PTZ.

4.3.2 Reset PTZ

By clicking the Reset PTZ button, the pan, tilt and zoom values for the selected plugin instance is reset to the defaults. (Fig. 9)

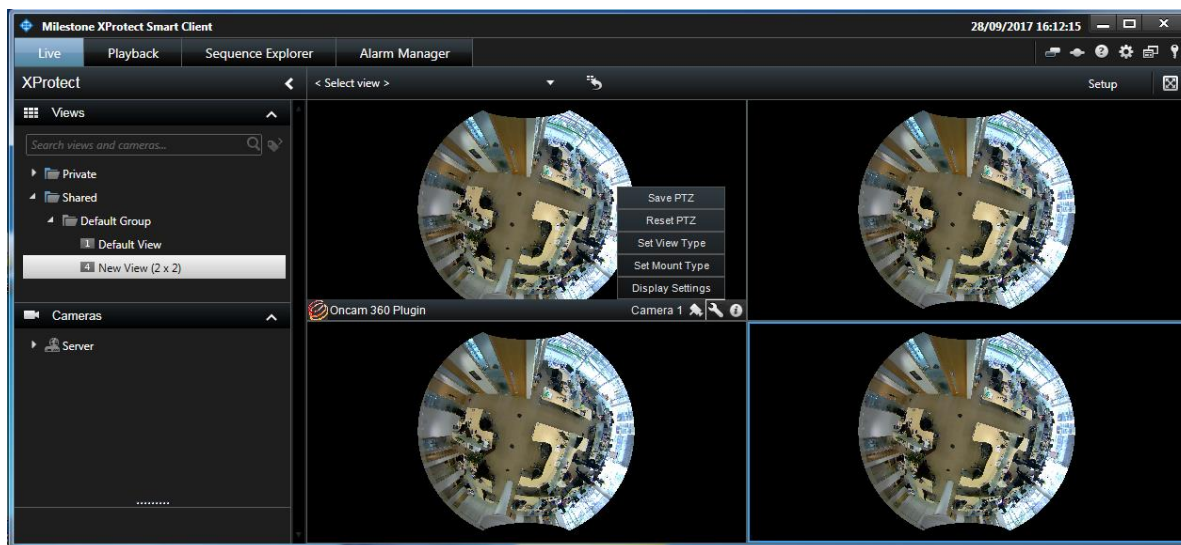


Fig. 9. Options. Resetting PTZ.

4.3.3 Selecting View Type

View type and mount type sub-menus can be reached from this menu, as well as the Display Settings menu. Placing the cursor over the “Set View Type” item, opens the view type sub-menu, listing available view types for the camera (Fig. 10).

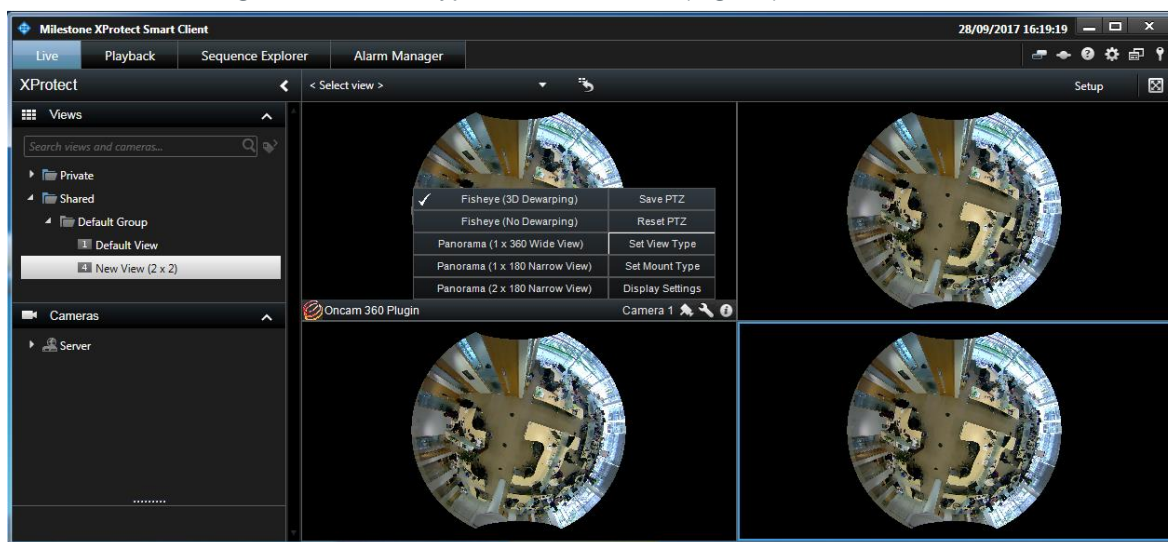


Fig. 10. Options. Selecting View Type.

4.3.3.1 The type of view can be set to one of the following:

- Fisheye (3D Dewarping) – The plugin will de-warp the received fisheye video allowing the user to Pan Tilt and Zoom within the video.
- Fisheye (No Dewarping) – The plugin will display the received fisheye video without de-warping it.

- Panorama (1 x 360 wide view) –The plugin will display a panorama image showing the entire 360-degree view across the screen. The image may be scrolled across the screen, but a full 360-degree view is always visible.
- Panorama (1 x 180 Narrow view) –The plugin will display a panorama image showing a 180-degree view across the screen. The image may be scrolled across the screen to view the remaining 180-degree view.
- Panorama (2 x 180 Narrow view) –The plugin will display two panorama images, each showing a 180-degree view across the screen which together show the full 360-degree view. The image may be scrolled across the screen, but a full 360-degree view is always visible. .

4.3.4 Selecting Mount Type

The mount type of the camera can be set by opening the options menu (wrench icon), placing the cursor over “Set Mount Type” item, and opening the related sub-menu (Fig. 11).

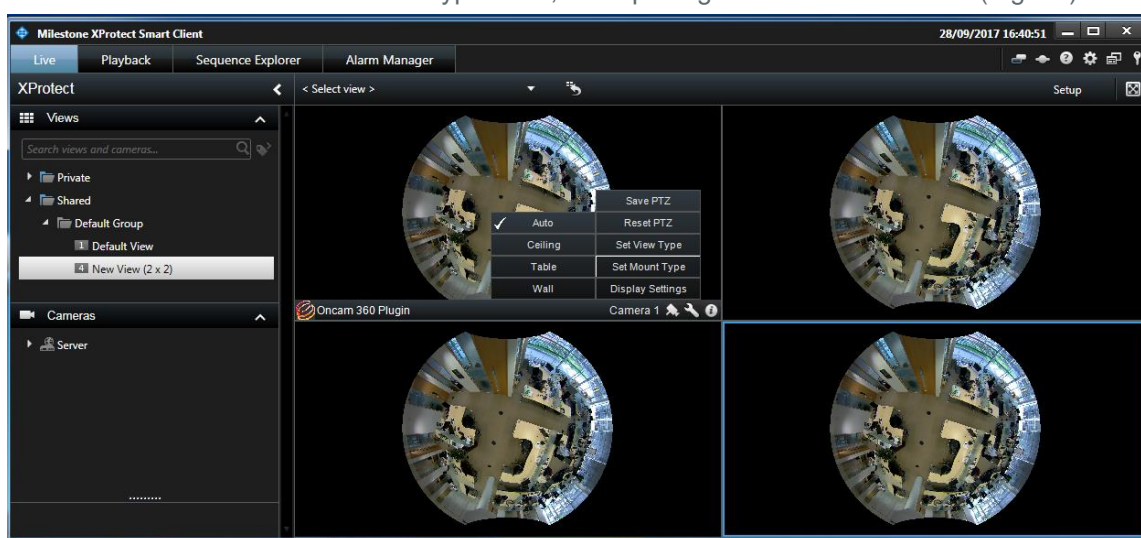


Fig. 11. Options. Selecting Mount Type.

The plugin can de-warp a fisheye image as if the camera is mounted in the Ceiling, Table or Wall mount positions. The difference between these affects the PTZ limits which can be applied and which way is 'up' for the panorama views.

4.3.4.1 The mount type can be set to one of the following:

- Auto – This option ensures that the plugin de-warps the fisheye video according to the data embedded in the image by the camera and so should be used as the default mount type.
- Ceiling – This option ensures that the plugin de-warps the fisheye video as if the camera is mounted on the ceiling.
- Wall – This option ensures that the plugin de-warps the fisheye video as if the camera is mounted on the wall.
- Table – This option ensures that the plugin de-warps the fisheye video as if the camera is mounted on a table.

4.4 About Information

Information about the Oncam 360 plugin can be accessed by clicking on the button with the “i” logo, which is located at the bottom toolbar of the plugin view item (Fig. 13).

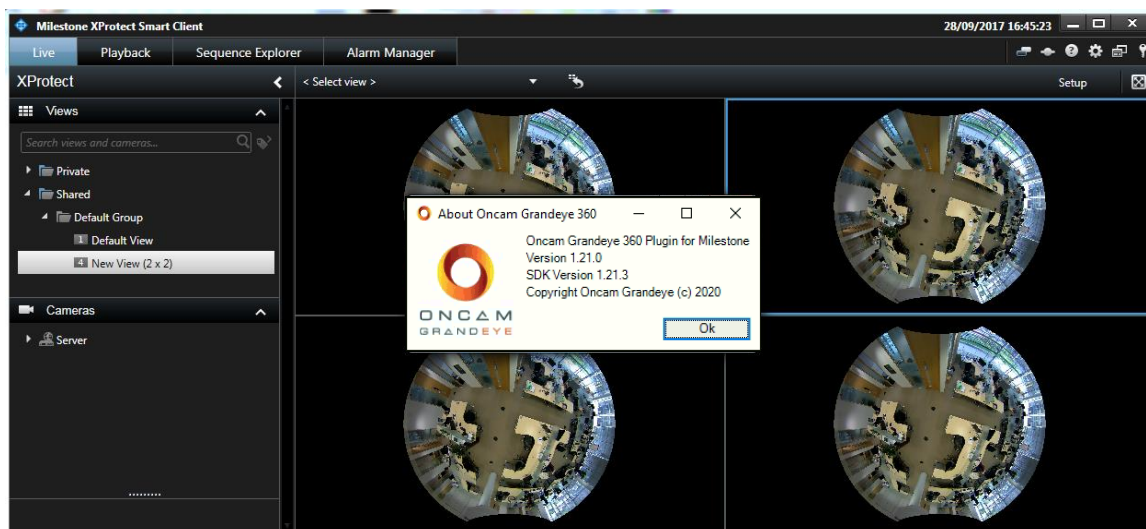


Fig. 13. About Oncam 360.

5. Removing a Plugin Instance

In order to remove a plugin instance from the views layout, enter the “Setup Mode” by clicking the “Setup” button, and click the “cross” icon located at the upper right corner on the plugin instance to be removed. Click the “Setup” button to exit the “Setup Mode” (Fig. 14).

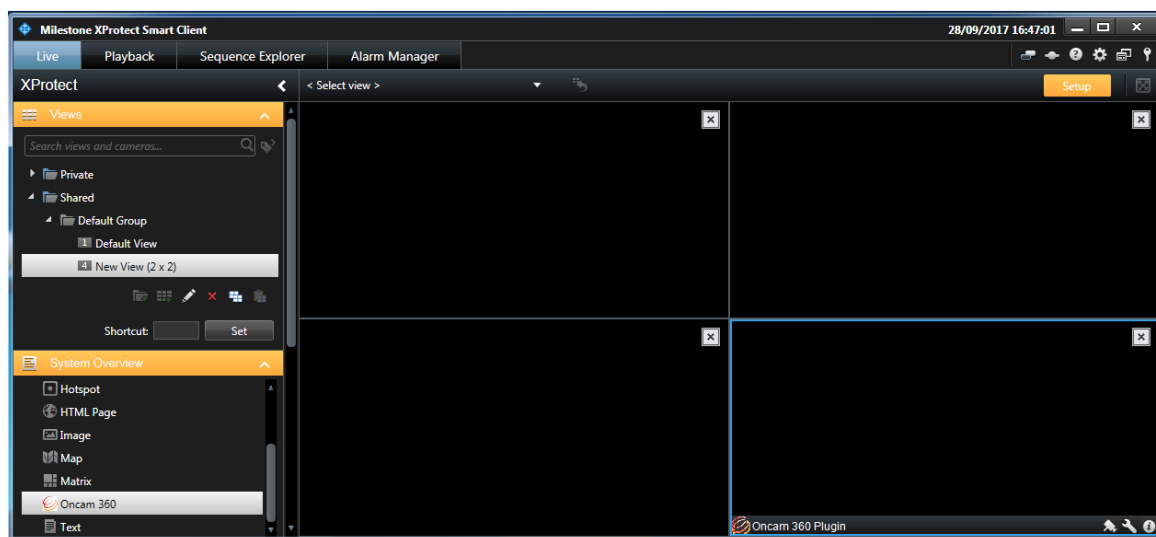


Fig. 14. Removing a plugin instance.