

Evolution 180 Indoor Camera

QUICK START GUIDE



EVO-180-WID



Important

- Read these instructions carefully before installing or operating this camera.
- This camera should be installed by a qualified service person and the installation should conform to local and national regulations.
- This camera is not suitable for installation in a ceiling void that is used as an air handling space.
- Certified as FCC Class A. In a domestic environment this camera may cause radio interference in which case the user should take adequate measures.



DANGER: RISK OF EXPLOSION IF REPLACING A BATTERY WITH AN INCORRECT BATTERY TYPE.

Welcome

The Oncam Evolution 180 Indoor camera is designed to be connected to an IP network. Configure and operate the camera using a standard internet browser.

Installation and configuration procedures are described for standard surface and pendant mount applications.

Power Input	Power over Ethernet (PoE), IEEE standard 802.3af or 12 VDC, 1.0 A (min) LPS, NEC Class 2 power supply
Operating Temperature (°C / °F)	0 to + 40°C (-32 to +104°F)
Enclosure	Aluminum and Polymer
Weight	0.55 kg (1.21 lbs)

Supplied Parts

- EVO-180 Camera
- 0° Mounting Box
- 25° Mounting Box
- 45° Mounting Box
- 3/4" NPT to M20 adapter
- M20 Conduit Port Plug
- Quick Start Guide
- Drilling Templates
- Screwdriver and Security Bit
- I/O Connector
- Camera Mounting Screws
- M20 Conduit Locking Nut

Technical Support

For the Datasheet, A&E Specification, Installation and User Manual, Software and Firmware visit:

<https://www.oncamgrandeye.com/product-downloads/>

Tel: UK +44 20 7371 6640
US +1 978 735 4860

Email: support@oncamgrandeye.com

MAC Address

Make a note of the camera's MAC address and installation location. Find the MAC address printed on the camera label. This information may be needed during the camera configuration.



Installation & Mounting

The Evolution 180 Indoor camera is designed for installation on flat surfaces. The camera is supplied with three different mounting boxes angled at 0°, 25° and 45°. These mounting boxes can be used to aim the camera at the most important area of the scene.

Note: You will require 4 appropriate fixing screws

Camera Module Preparation

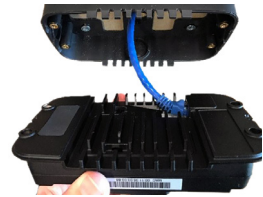
1. Undo the two side screws, while holding the camera cover in place.
2. Remove the cover exposing the camera module.
3. Take care not to touch the lens glass.

Surface Installation

1. Remove the mounting box back cover. Slide the back cover upward away from the bracket body.
2. Fit the M20 Conduit plug, if the port is unused.
3. Using the drilling template, drill mounting holes.
4. Fix the mounting box onto the installation surface using appropriate screws for the surface type. Route the network cable through one of the M20 conduit holes or at the rear of the mounting bracket.
5. Continue to "Completing Installation".

Pendant Installation

There are M20 threaded holes in all of the camera mounting boxes, to allow them to mount directly onto the bottom of a threaded conduit, or onto a compatible camera pendant arm. A 3/4" NPT adapter is supplied for 3/4" conduits.



1. Screw the Mounting Box onto the threaded conduit (using the 3/4" NPT adapter if required).
2. Pass a network cable through the conduit into the mounting box, and terminate the cable.

Completing Installation

1. Connect the network cable to the camera.
2. There are anchor points on the back of the camera to secure the network cable if required.
3. Fit the camera to the mounting box, ensuring the arrow on the face of the camera is pointing up, and secure with the four screws provided.
4. Refit the camera cover using the two side screws.
5. Peel off the lens cover.

Startup

Powering the Camera

Supply power to the camera with PoE IEEE802.3af through the integrated RJ45 Ethernet port or using the 12V DC input pins on the I/O connector. Do not use both power sources at the same time. Both camera LEDs will be green when the camera is booted with an ethernet connection.

IP Settings

In order to use the camera you need the IP address.

There are two IP Settings.

- DHCP server or router to automatically assign unique valid IP addresses to each camera.
- A manually configured network using static IP addresses.

If your network has a DHCP server, go to First Time Camera Access. Should a DHCP server not be available, the camera adopts the default static IP address **192.168.0.200**.

You will then need to manually assign each camera with a new unique IP address using the camera configuration tool.

Note: See the camera's User Manual and Camera Configuration Tool User Manual for IP Setting.

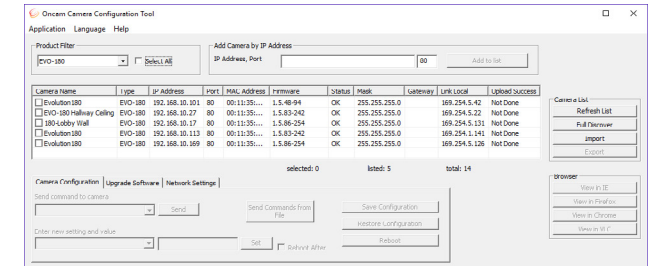
Using the Camera Configuration

Go to the Oncam website (<https://www.oncamgrandeye.com/resources/camera-config-tool/>) to download the latest version of the Camera Configuration tool and corresponding User Manual.

The Camera Configuration tool quickly finds the IP and MAC addresses of all Oncam Evolution cameras connected to the network. It also allows you to change network settings, configure the system and perform software updates on multiple cameras. Initiate a new scan by clicking the Full Discover button

Start the application by clicking the CameraConfigurationTool icon found on your desktop or from the program list (under Oncam Grandeye). The software scans the network and provides a list of all connected Oncam Evolution cameras.

Note: Some functions in this tool require a username and password. If accessing the camera for the first time, an administrator username and password will need to be set.



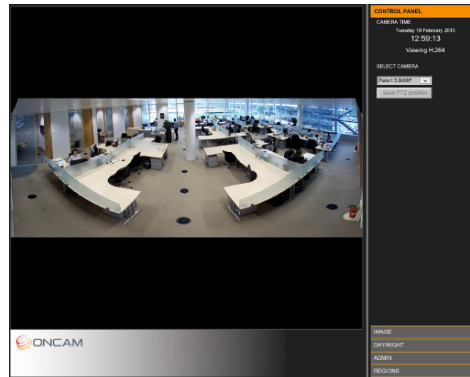
First Time Camera Access

Web Browser

1. If you know the IP address of the camera, enter this into the address bar of your web browser (Internet Explorer, Edge, Firefox or Chrome). The camera should be on the same network.
2. Create an Admin username and password.

Camera Configuration Tool

1. Select a camera from the camera list
2. Select your browser to open the web interface.
3. Click OK on the authentication pop up. You will then be prompted to create and set an Admin username and password to access the camera.



Notes:

Internet Explorer 11 is required to view live camera images in the browser. All other browsers can be used for Configuration Purposes only.

Ensure you have the latest VLC Media Player (<http://www.videolan.org/vlc/index.html>) for viewing camera images on the web interface.

Next Steps

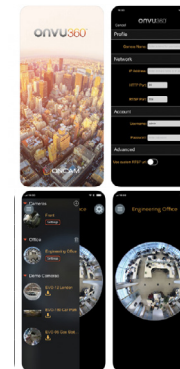
The camera's web GUI has sophisticated adjustments in the IMAGE tab, for different mounting angles and scenes.

If the camera itself is tilted, set the wall mount angle corresponding to the tilt e.g. -25°, -45° to make vertical lines in the scene parallel.

Scene offset angle allows the panoramic view to be adjusted up or down to precisely capture the desired scene.

Download our FREE ONVU360 Pro mobile application and put the 360-degree experience right at your fingertips.

Scan the QR Code to get it now!



Android



iOS

