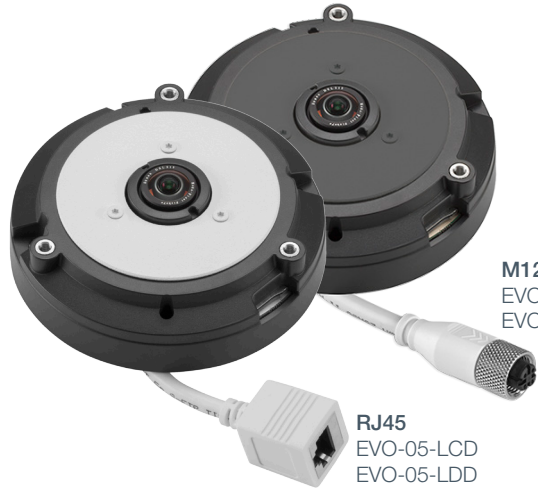


# Evolution 05 Mini Panel-Mount

## QUICK START GUIDE



M12  
EVO-05-LCM  
EVO-05-LDM

RJ45  
EVO-05-LCD  
EVO-05-LDD



### Important

- Read these instructions carefully before installing or operating this camera.
- This camera should be installed by a qualified service person and the installation should conform to local and national regulations.
- This product is only suitable for a surface mount installation and should not be modified or adapted for any type of plenum installation.
- Certified as FCC Class A. In a domestic environment this camera may cause radio interference in which case the user should take adequate measures.



**DANGER: RISK OF EXPLOSION IF REPLACING A BATTERY WITH AN INCORRECT BATTERY TYPE.**

### Welcome

The OnCam Evolution Indoor Panel-Mount 360° camera is designed to be connected to an IP network. Configure and operate the camera using a standard internet browser.

Described are the installation and configuration procedures for a standard surface mount camera application.

Power Input	Power over Ethernet (PoE), IEEE standard 802.3af
Operating Temperature	0 to +40°C (-32 to +104°F)
Enclosure	Polymer
Weight	0.20 kg (0.44 lbs)

### Supplied Parts

- EVO-05 Mini Camera
- Mounting Kit
- Quick Start Guide
- Torx Screwdriver Bit
- Drilling Template

### Technical Support

For the A&E, Specification, Installation and User Manual, Software and Firmware visit:

[www.oncamgrandeye.com/resources/](http://www.oncamgrandeye.com/resources/)

**Tel:** UK +44 (0)20 7371 6640

US +1 978 735 4860

**Email:** [support@oncamgrandeye.com](mailto:support@oncamgrandeye.com)

### MAC Address

Document the camera's installation location and unique MAC address. Find the MAC address printed on the camera label. This information may be needed during the camera configuration.



### Mounting & Installation

The Evolution 05 Mini Panel Mount camera provides quick and easy installations in shallow areas requiring the EN50155/EN45545 transport certification.

The panel mount camera comes with an RJ45 or M12 plug and spans a 108 mm (4.25-inch) diameter. Three Torx screws attach the front plate to the base.

Install the Mini Panel camera behind thin flat surfaces of 1 to 3 mm (.04 to .12-inch) thickness, such as walls or ceilings.

**NOTICE:** Do not over-tighten the Torx screws. Only hand tighten.

1. Prepare the surface by using the supplied drilling template. Drill holes appropriately sized for the three base holes and center clearance hole.
2. Loosen the three screws from the front plate using the Torx tool. Remove the front plate.
3. Position the camera behind the panel surface with the fisheye lens protruding through the center hole. Align the surrounding three holes.
4. Reattach the front plate using the three Torx screws. The panel is sandwiched between the front plate and the camera.
5. Apply power and remove the screen protection.



## Configuring Network Settings

### Powering the Camera

Supply power to the camera with PoE IEEE802.3af through the integrated cable.

### IP Settings

In order to use the camera you need the IP address.

There are two IP Settings.

- DHCP server or router to automatically assign unique valid IP addresses to each camera.
- A manually configured network using static IP addresses.

If your network has a DHCP server, go to [Viewing images for the first time](#).

Should a DHCP server not be available, the camera adopts the default static IP address 192.168.0.200. You will then need to manually assign each camera with a new unique IP address.

**Note:** See the camera's User Manual and Camera Configuration Tool User Manual for IP Setting.

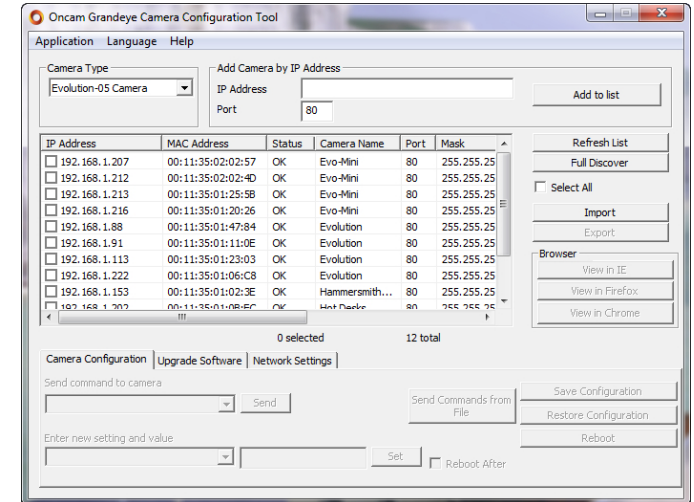
## Using the Camera Configuration Tool

Go to the Oncam website (<https://www.oncamgrandeye.com/security-systems/camera-configuration-tool.html>) for downloading the latest version of the Camera Configuration tool and corresponding User Manual.

The Camera Configuration tool quickly finds the IP and MAC addresses of all Oncam IP cameras connected to the network. It also allows you to change network settings, configure the system and perform software updates on multiple cameras. Initiate a new scan by clicking the Full Discover button.

Start the application by clicking the CameraConfigurationTool icon found on your desktop or from the program list (under Oncam Grandeye). The software scans the network and provides a list of all connected Oncam IP cameras.

**Note:** Some functions in this tool require a username and password. The default username and password is 'admin'.

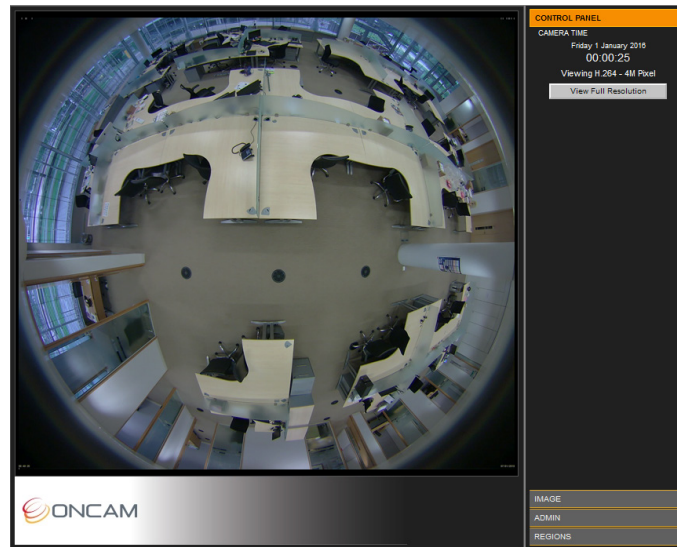


## Viewing Images the First Time

To view live images from any camera on the network:

1. If you know the IP address of the camera, enter this into the address bar of your web browser (Internet Explorer, Firefox or Chrome). The camera should be on the same network.
2. Enter the Username and Password (default is "admin").
3. Using the Camera Configuration Tool, select one or multiple cameras from the camera list.
4. Select your browser to open the web interface.
5. Enter your Username and Password (default is "admin").

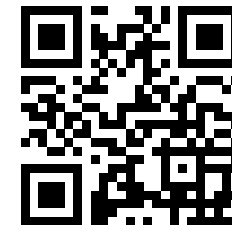
**Note:** Ensure you have the latest [VLC Media Player](http://www.videolan.org/vlc/index.html) (<http://www.videolan.org/vlc/index.html>) for viewing camera images on the web interface.



Download our FREE OnVu360 mobile application and put the 360° real time monitoring experience right at your fingertips.

onvu360  
Scan the QR Code to get it now.

Android



iOS

