



Oncam 360° Viewer

Installation and User Manual

© Oncam Global Group AG, 2013 - 2017. All rights reserved.

Version 3.17

Manual Copyright

© Oncam Global Group AG, 2013 - 2017. All rights reserved.

No part of this manual may be reproduced except for your express personal use.

Oncam and their affiliate's further reserve the right to alter, amend or revise this document and any product specifications without any obligation to provide notice of such changes.

Oncam and its affiliates make no guarantee, representation or warranty, either expressed or implied, regarding the accuracy of the information contained in this manual. Furthermore, Oncam and its affiliates assume no responsibility or any potential liability for any errors that may appear in this manual.

Trademarks and Third-Party Copyrights

Oncam and the Oncam logo are registered trademarks of Oncam Global Group AG.

Oncam and the IPZoom logos are trademarks of Oncam Global Group AG (and its affiliates).

SATIV is a service mark of Oncam Global Group (and its affiliates).

The names of other companies, organizations, products or services mentioned in this manual are the trademarks of their respective owners.



Important Safety Instructions

1. Read these instructions.
2. Keep these instructions.
3. Heed all warnings.
4. Follow all instructions.
5. Do not immerse in water. Protect the connectors from moisture.
6. Do not block any ventilation openings, Install in accordance with the manufacturer's instructions.
7. Do not install near any heat sources such as radiators, heat registers, stoves, or other apparatus (including amplifiers) that produce heat.
8. The polarity of any connector attached to the product should be verified before connection.
9. Protect all cables from being crushed or pinched particularly at plugs, convenience receptacles, and the point where they exit from the apparatus.
10. Only use attachments / accessories specified by the manufacturer.
11. Unplug or appropriately protect this apparatus during lightning storms or when unused for long periods of time.
12. Refer all servicing to qualified service personnel. Servicing is required when the apparatus has been damaged in any way, such as power-supply cord or plug is damaged, liquid has been spilled or objects have fallen into the apparatus, the apparatus has been exposed to rain or moisture, does not operate normally, or has been dropped.

WARNING



RISK OF EXPLOSION IF REPLACING A BATTERY WITH AN INCORRECT BATTERY TYPE

Contents

| | | |
|-------|-------------------------------------|----|
| 1 | Introduction | 4 |
| 2 | Installing the Viewer | 4 |
| 3 | Using the Viewer | 4 |
| 3.1 | Running the Viewer Software..... | 4 |
| 3.2 | Toolbars..... | 4 |
| 3.3 | Finding Cameras on the Network..... | 5 |
| 3.3.1 | Camera List Dialogue Box..... | 5 |
| 3.4 | Recordings..... | 7 |
| 3.4.1 | Lock / Unlock..... | 7 |
| 3.4.2 | Download | 7 |
| 3.4.3 | Settings | 7 |
| 3.5 | Tour Mode | 8 |
| 3.6 | Screen Layout..... | 8 |
| 3.7 | Drop down menu..... | 9 |
| 3.7.1 | Camera Mount | 9 |
| 3.7.2 | Dewarp Type..... | 9 |
| 3.7.3 | Camera Page | 10 |
| 3.7.4 | Settings | 10 |

1 Introduction

The 360-degree viewer software application is designed to allow live viewing and dewarping of images from any Oncam camera that is connected to the same network.

2 Installing the Viewer

The software is distributed as a setup program which can be installed on a laptop or desktop PC (Windows 7 and above). Double click the setup.exe file and click 'yes' if a warning dialog appears (standard security check).

3 Using the Viewer

3.1 Running the Viewer Software

Double click the '*Oncam Grandeye 360-degree Viewer*' icon on the desktop to launch the application. The viewer application runs and presents the user with a main video window and a toolbar on the left hand side.

- There are no additional settings for this software once it is running
- Allows for MJPEG and H.264 viewing and all resolutions accepted
- The viewer automatically streams using either MJPEG or H264 depending on the setup of the camera that it is connected to

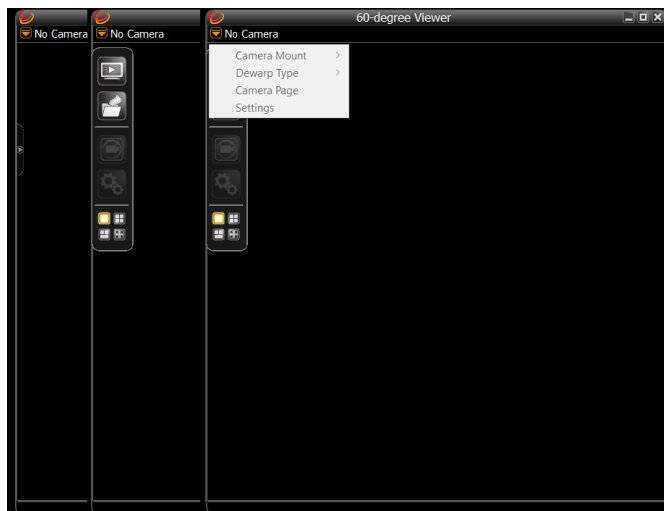
3.2 Toolbars

There are 2 toolbars, a graphical one with icons is displayed when the small arrow or tab on the left hand edge of the screen is selected. The second toolbar is available as a drop down menu when the mouse selects the small orange arrow in top left hand corner of the window.

The visual toolbar automatically hides away when the mouse is moved away from it. Click on the small tab on the left hand edge of the application to bring it back.

The visual toolbar comprises icons for:

- Locating cameras on the network
- Recordings (if they are available)
- Tour guide
- Settings
- Screen layout



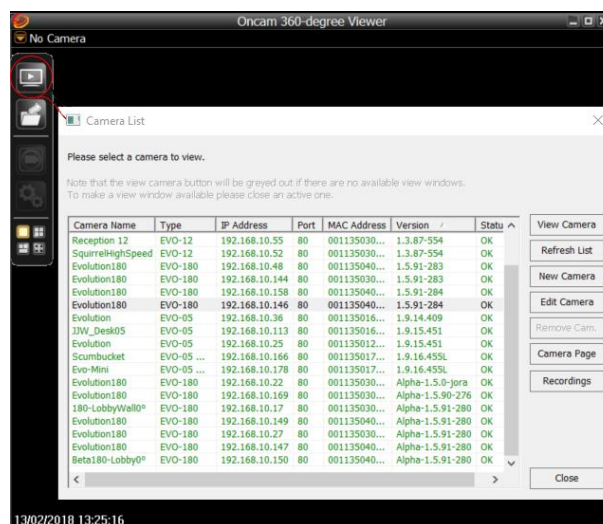
The drop down menu is only active when a camera is selected from the list otherwise it is greyed out.

The text menu comprises the following options:

- Camera Mount
- Dewarp type
- Camera Page
- Settings

3.3 Finding Cameras on the Network

Click the top 'Play' icon on the toolbar to bring up the camera list.



3.3.1 Camera List Dialogue Box

This dialog auto-discovers cameras on the network and presents them as a multi-select list (use ctrl-click or shift-click to multi-select). Click 'Refresh List' to update the list with recently added cameras.

To view a camera either double click the line with the camera in it or select it and click 'View Camera'.

If there is only a single view window then the latest selected camera will replace the currently shown one.

If there are multiple view windows then the 'View Camera' button is only active when there are enough spare windows to display another camera view. If you would like to change the contents of one of the windows then you'll need to close it first by selected x in the top right hand corner.

Click 'New Camera' to manually enter the details for a camera. This is useful for cameras that are not on the local network, which cannot be found by auto-discovery.

Click 'Edit Camera' to change the details for a camera.

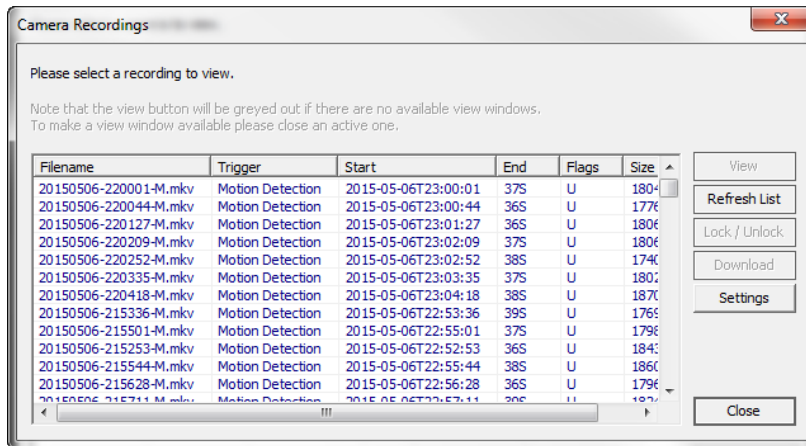
Click 'Remove Camera' to remove a camera from the list previously added by clicking 'New Camera'.

3.4 Recordings



If one of the camera listed has an SD/micro SD card installed then the user can access and view the recordings from the card if there are any available.

Select the camera in the list, then click on the Recordings button to open the list of video clips present on the camera's SD/microSD card.



The window will show a list of all the video clips recorded on the SD/microSD card in the camera. The following information is available:

- **Filename:** includes the date and time the video clip was recorded
- **Trigger:** gives information on the event that triggered the recording
- **Start:** indicates the starting date and time of the recording
- **End:** indicates the length of the recording
- **Flags:** shows if the video clip is unlocked “U”, or locked “L”
- **Size:** shows the size of the video clip

3.4.1 Lock / Unlock

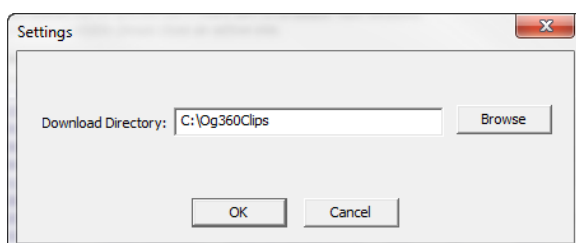
This feature allows the user to Lock one or multiple video clip so they are not overwritten by the camera when the SD card is full. To lock a clip, simply select it in the list and click the Lock button. Repeat this operation to unlock the clip.

3.4.2 Download

This feature allows the user to download one or multiple clips to his local storage. To download a clip, select it in the list and click on Download. The clip will be downloaded on the location set by default (C:/Og360Clips). If this directory doesn't exist it will be created with the first download.

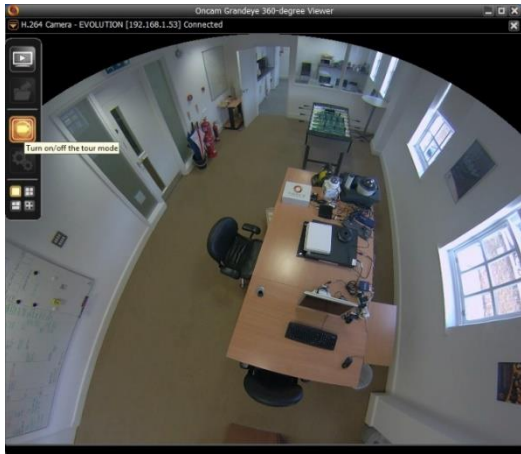
3.4.3 Settings

This allows the user to set up the default location for storing the downloaded clips. It is by default set to: C:/Og360Clips and can be changed by clicking on the Browse button.







3.5 Tour Mode

When viewing a camera, there is the option to put the dewarping feature in to an **Auto Tour Mode**. This is selected by toggling the Auto Tour button. If this feature is greyed out, this means the feature is not available.



3.6 Screen Layout

The user has a choice of presenting the views in the following formats:

-  A single Vcam Window
-  Dual Vcam Windows + one Panoramic Window
-  Quad Vcam Windows
-  Full Screen Mode for either of the above modes selected

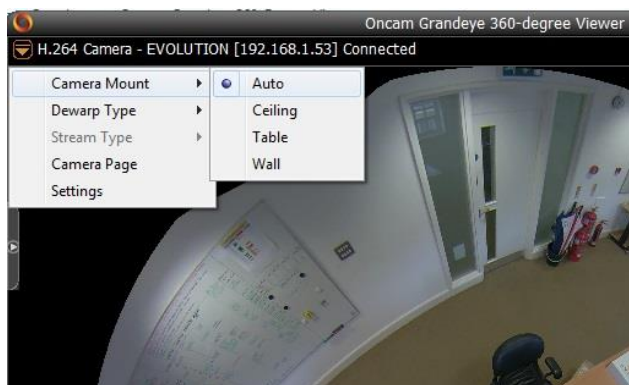


3.7 Drop down menu

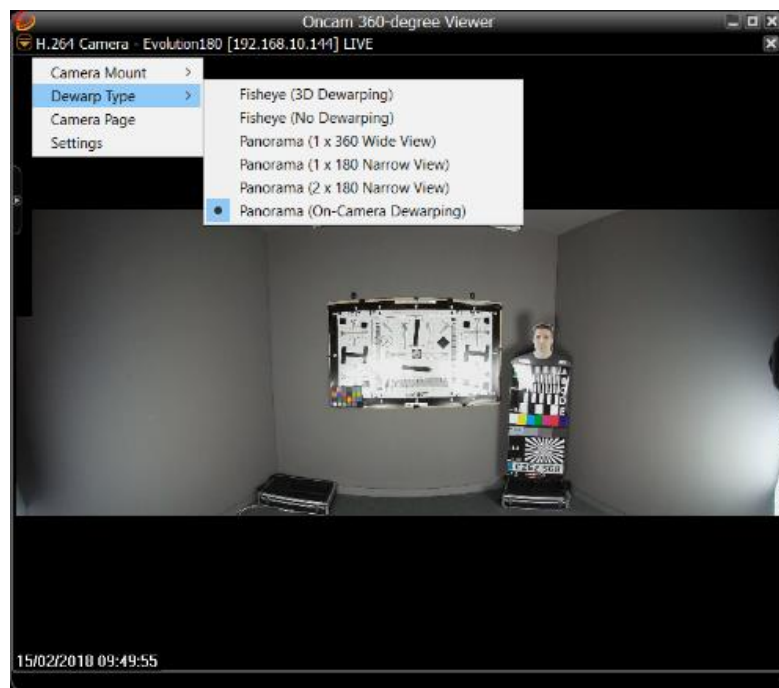
3.7.1 Camera Mount

The following options allow the dewarping functionality to be used for different camera mounting positions:

| | |
|----------------|---|
| Auto | Orientation as set in the cameras web page setup |
| Ceiling | Always dewarp as if the camera is in ceiling mount mode |
| Table | Always dewarp as if the camera is in table mount mode |
| Wall | Always dewarp as if the camera is in wall mount mode |



3.7.2 Dewarp Type



These options select how the image is dewarped:

Dewarp Types:

- Fisheye (3D Dewarping)** → Dewarp the fisheye image from the camera as a vCam.
- Fisheye (No Dewarping)** → Display the image from the camera without dewarping it.
- Panorama (2 x 180 Narrow View)** → Dewarp the fisheye image from the camera as 2*180-degree panoramas.
- Panorama (1 x 180 Narrow View)** → Dewarp the fisheye image from the camera as 1*180-degree panorama.
- Panorama (1 x 360 Wide View)** → Dewarp the fisheye image from the camera as 1*360-degree panorama.
- Panorama (On-Camera Dewarping)** → The panoramic image is streamed directly from the camera as per camera settings.

3.7.3 Camera Page

Access the camera webpage directly from this drop down list to aid adjusting other camera settings that are available in the web page (e.g. IP address settings / camera stream settings / fps / bit rates / privacy zones / time and date / WDR)

3.7.4 Settings

From this drop down menu, the settings for the image parameters are defined:

Manual settings for Brightness / Contrast / Saturation

Auto settings for Contrast / Saturation / White Balance

In this menu are the **Camera Auto Reconnection** and reset image settings to **Factory Defaults**.

